

**European Humanities University
Trust Fund
Donors' Assembly
Vilnius
June 2, 2009**

Part I: Interim Report

Structure of the Presentation

- This presentation is based on the EHU Interim Report and the EHU Trust Fund Financial Report
- Progress and challenges are examined in 6 areas:
 - Governance and Administration
 - Education
 - Research and Regional Impact
 - International Cooperation
 - Sustainability
 - Budget Implementation
- Fundraising progress and challenges are discussed separately after the break

Basic Facts about the EHU

History

Founded in Minsk in 1992.

Closed by authorities in 2004.

Re-launched activities in Vilnius in 2005.

Granted the status of a Lithuanian university in 2006.

Academic Programs

8 BA Face-to-Face degree programs providing 13 specializations

8 BA, Low Residence degree programs

7 MA degree programs

Total Student Body

1,326 BA students in face-to-face and low residence education

184 MA students

132 non-degree, continuing adult education students

2009 Graduates

120 students (first BA graduating class in exile)

80 MA students

Alumni

91 MA students graduated in exile since 2007

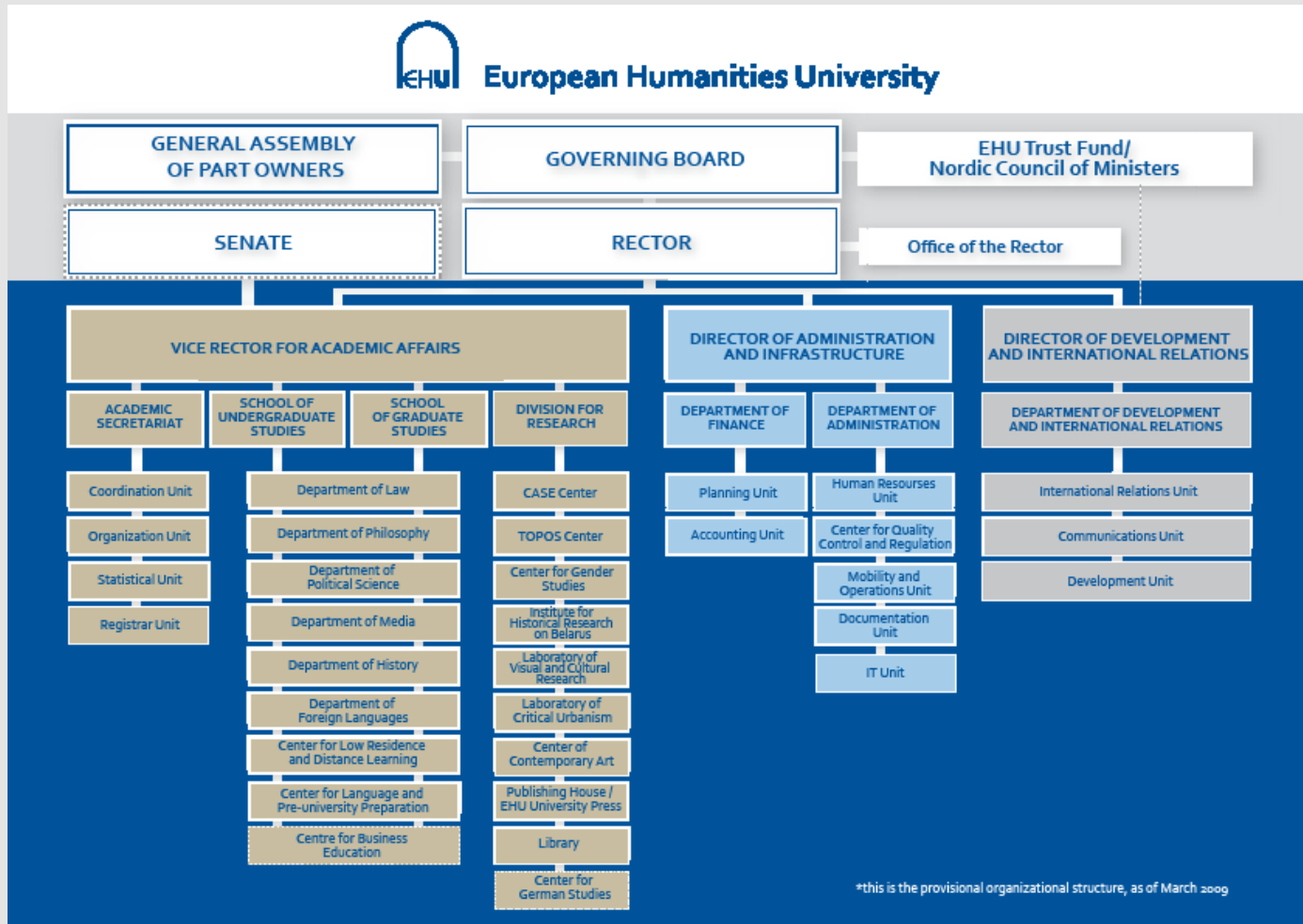
95% returned to Belarus; mostly working in civil society

Governance and Administration (1)

Progress:

- 11-member Governing Board adopts five-year Strategic Plan
- 21-member self-governing Senate elected by academic community
- Leadership team appointed
- Provisional reorganization accomplished; ongoing reorganization in academic affairs

Governance and Administration (2)



Governance and Administration (3)

Challenges:

- Mobility between Belarus and Lithuania requires constant attention and development
- Harmonizing traditions, attitudes, and practices while building competencies and capacities

Education (1)

Progress:

- Belarusian Studies a distinct, essential area of academic study
- Retention rates improved on all levels
- Students' academic performance improved overall
- Expanded role of students in policy-making
- Student support services enhanced
- Permanent, core faculty and academic staff converted from ad-hoc basis
- Overall quality evaluated positively by Lithuanian regulators
- Number of applications increasing

Education (2)



ORIGIN OF APPLICATIONS BA PROGRAMS 2008



Education (3)

Challenges:

- The student body is expanding naturally; student services will need to be strengthened
- Transformation of the education content on BA and MA levels
- Integration of quality assurance in education and research on all levels
- Tracking graduates

Research and Regional Impact (1)

Progress:

- Research recognized as development priority; main research directions identified
- Regional research collaboration and research networking advanced
- Faculty research support structure advanced
- Research strategy and action plan being developed
- Publications in international journals

Research and Regional Impact (2)

Challenges:

- Development of PhD Studies to deepen and expand scientific knowledge
- Strengthening and broadening the network of scholars
- Facilitating access to literature and collaborative publications
- Advancement of high-quality research and scholarly forums to raise the level of professionalism in social science scholarship

International Cooperation (1)

Progress:

- Support infrastructure for incoming and outgoing students and lecturers advanced
- Connections to other universities in Europe and North America improved
- Benefits to students, faculty and staff increased

International Cooperation (2)

Challenges

- Constraints on Belarusian citizenship
- Limited support for incoming students and lecturers
- Harmonizing academic content and credit transfer
- Meeting the different procedures and requirements of international organizations

Sustainability (1)

Progress:

- Five-Year Strategic Plan adopted by Governing Board
- Annual budget stabilized and implemented according to Financial Plan
- Efficiency of budget implementation improved overall
- Income from tuition fees increased; revenue-generating programs under development
- University re-structured; support units re-organized; personnel structure stabilized

Sustainability (2)

Challenges:

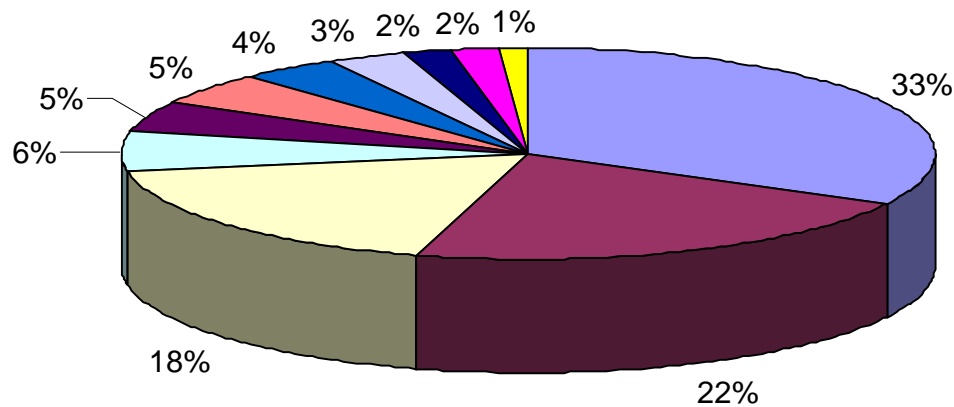
- EHU seeks to diversify its income base but encounters constraints in reaching out to non-Belarusian students
- The question of teaching and administration premises needs to be solved by 2012
- Information systems need to be developed and secured for the automation of enrollment and basic administration functions

Financial Statement (1)

- Total AY 2008/2009 budget - 5.68 million EUR
- 42% used during the first half of the year
- Tuition fee income more than planned (108 %) due to higher retention rate of students
- Trust Fund allocation is the most flexible form of income, therefore used in the second half of the academic year
- Revenue-generating programs being developed but not yielding income

Financial Statement (2)

Forecasted Expenditure AY 2008-2009



- Staff Cost
- Operations
- Belarusian Academic Infrastructure and Networks
- Special and Extension Projects
- Faculty Development
- Student Activities
- Student Scholarships
- Expenses of Joint Programs
- Faculty Mobility
- Contingency Reserve
- Institutional Advancement and Development

Financial Statement (3)

Preliminary trends in 2009/2010 forecast

- Budget reduction due to overall efficiency achieved because of budget stabilization and organizational restructuring (5.27 million EUR)
- The Trust Fund is expected to provide 54% more than 2008/2009 due to the fading out of projects in Secured Funding; this includes stipends for students
- Funding secured outside of the Trust Fund is expected to decrease by 73% as projects expire
- Funding from tuition fees will increase overall

Fundraising will be covered after the break.